

KSWM series

KSWM Series



Model			KSWM009-H113	KSWM012-H113	KSWM018-H213	KSWM024-H213
Power supply		Ph-V-Hz	1, 115V~, 60Hz	1, 115V~, 60Hz	1, 208/230V~, 60Hz	1, 208/230V~, 60Hz
Cooling	Capacity	Btu/h	9500	12000	18000	24000
	Input	W	800	1090	1530	2000
	Rated current	A	7,5	10	6,7	8,8
	SEER	Btu/w.h	13,28	13	13,33	13,58
Heating	Capacity	Btu/h	10000	13000	18000	24000
	Input	W	900	1160	1630	2000
	Rated current	A	7,3	10,6	7,1	8,8
	HSPF	Btu/w.h	8,03	8,64	8,05	8,66
Moisture Removal	L/h	0,9	1,35	1,55	2	
Max. input consumption	W	1050	1460	2100	2950	
Max. current	A	10,2	14	10,2	14	
Starting current	A	40	47	32,6	34,8 A	
Indoor air flow (Hi/Mi/Lo)	cfm	400/320/250	440/370/330	620/540/490	780/680/600	
Indoor noise level (Hi/Mi/Lo)	dB(A)	41/35/28	45/41/38	45/43/41	50/47/44	
Outdoor noise level	dB(A)	53	55	58	59	
Refrigerant type/ Charge amount	oz	R410A/ 38	R410A/ 48	R410A/ 72	R410A/ 86	
Design pressure	psi	650	650	650	650	
Operation temp	F	62 to 86	62 to 86	62 to 86	62 to 86	
Ambient temp	F	19 to 115	19 to 115	19 to 115	19 to 115	
Application area	Sq Ft	up to 400	400 - 600	600-800	800-1200	
Compress or	Type		ROTARY	ROTARY	Rotary	
	Brand		GD TOSHIBA	GD TOSHIBA	GD TOSHIBA	
Refrigerant piping	Liquid side/ Gas side	in OD	1/4" / 3/8"	1/4" / 1/2"	1/4" / 1/2"	3/8" / 5/8"
	Max. refrigerant pipe length	ft	32	32	50	65
	Max. difference in level	ft	16	16	26	32
Indoor unit	Dimension (W×H×D)	in	32×11×7.7	35.6×11.3×9.3	49.2×12.8×9	49.2×12.8×9
	Packing (W×H×D)	in	36×14.2×10.8	40.1×15×12.9	53×17×13.2	53×17×13.2
	Net/Gross weight	LBS	17.6 / 24	25.3/33	40/55	40/55
Outdoor unit	Dimension (W×D×H)	in	30.7×9.9×21.2	30×11.2×23.2	33.3×13.2×27.4	35.2×13×33.9
	Packing (W×D×H)	in	35.8×13.2×22.6	34.9×14×25.8	38×15.6×29.7	41×15.6×36
	Net/Gross weight	LBS	73/79	84/90	120/128	151/161

NOTE: SPECIFICATIONS AND PERFORMANCE DATA LISTED HEREIN ARE SUBJECT TO CHANGE WITHOUT NOTICE

7909 N.W. 54th Street,
Miami, FL 33166 USA
Phone: +1 (305) 593-8358
Fax: +1 (305) 593 8212
e-mail: sales@klimaire.com
www.klimaite.com

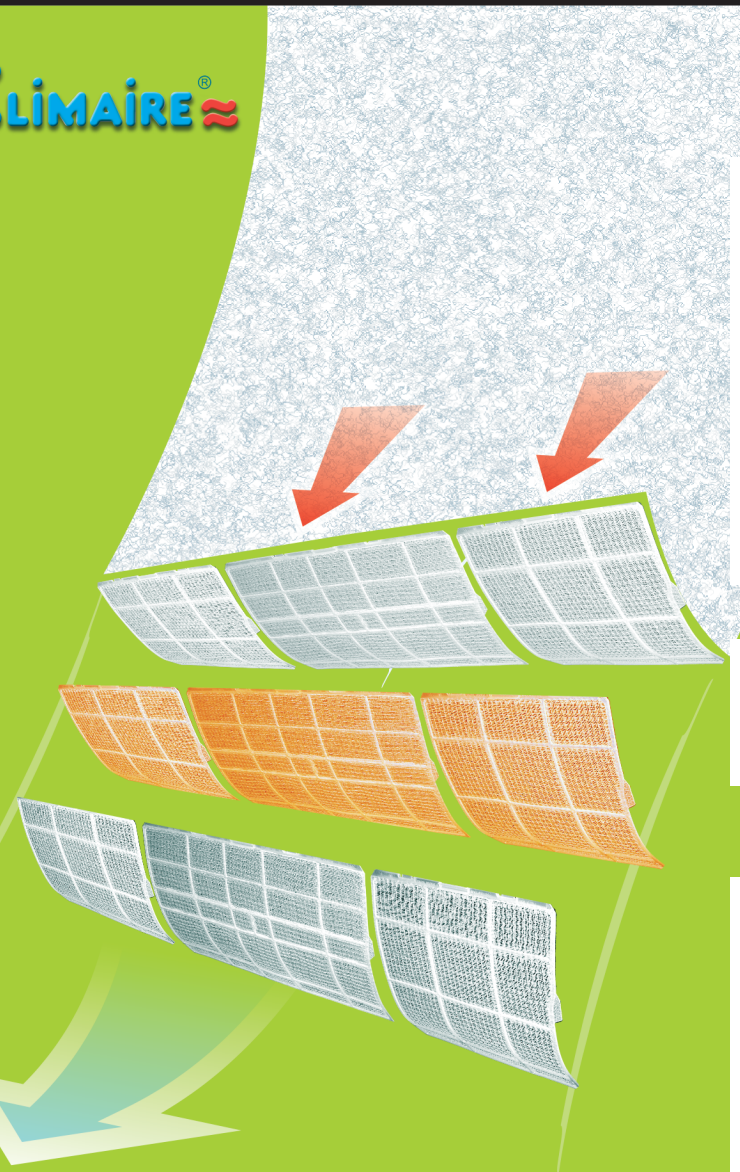
KLIMAIRE®

The advertisement features a woman smiling in the foreground. In the background, there is a white Klimaite air conditioner unit mounted on a wall. The background is a light blue and green gradient. The text "KSWM series" is written in a stylized font. Below it, the phrase "freshness and health flow" is written in a curved path, accompanied by images of kiwi, oranges, and a kiwi slice. The Klimaite logo is at the bottom right.

KLIMAIRE®

Klimaïre brings you clean and refreshing air and fills your room with the soothing scent of nature.

Klimaïre



Silver Ion

Bacteria Dust

Silver Ion Filter (Optional)

The Silver ion can kill bacteria or prevent their activity at very low density by destroying their inner-configuration and absorbing their elements in cells. Meanwhile, the Nano Silver attached on the filter release the Silver ion constantly to eliminate bacteria effectively and continuously.

Standar Filter

Vitamin C Filter

Vitamin C Bacteria

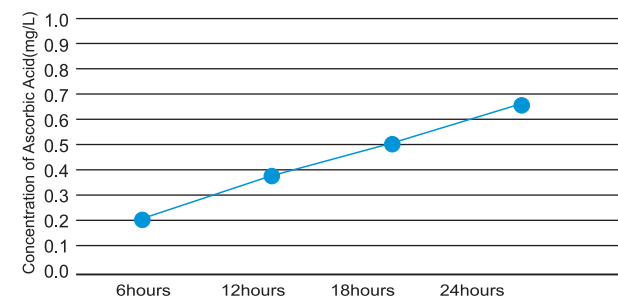


The photo is zoomed 3000 times.

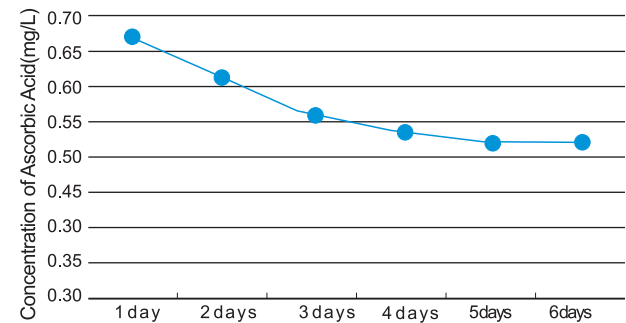
Vitamin C Filter (Optional)

The Vitamin C filter fills the air with vitamin C, which softens the skin and reduces stress. The lifetime of the Vitamin C filter is approximately two years.

Progress of "Vitamin-C emission" every 6 hours



Performance of the emission in case of Continuous running

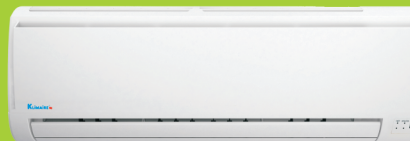


kswm

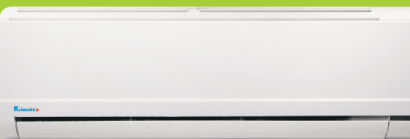
- KSWM009-H113 13SEER 9000Btu/h - Cooling & heating - 115V/60Hz/1Ph
- KSWM012-H113 13SEER 12000Btu/h - Cooling & heating - 115V/60Hz/1Ph
- KSWM018-H213 13SEER 18000Btu/h - Cooling & heating - 220V/60Hz/1Ph
- KSWM024-H213 13SEER 24000Btu/h - Cooling & heating - 220V/60Hz/1Ph



INDOOR 9.000 - 12.000 BTU/h



INDOOR 18.000 BTU/h



INDOOR 24.000 BTU/h



OUTDOOR 9.000 BTU/h



OUTDOOR 12.000 BTU/h



OUTDOOR 18.000 BTU/h



OUTDOOR 24.000 BTU/h



Features



Easy-cleaned Panel

The front panel may be easily removed for periodic cleaning.



Auto-Restart Function

when the power is off and then on, The unit automatically restores the previous function setting.



Hydrophilic Aluminum Fin

In the indoor unit, it improves the cooling efficiency by enabling the unrestricted flow of condensate between the heat exchange fins. In the outdoor unit, it improves the heating efficiency by accelerating the defrosting process.



Two-direction Air Vane Technology

In cooling mode, the air vane opens counterclockwise, which directs the air horizontally. It allows for rapid and evenly distributed temperature fall.



Self-diagnosis and Auto-protection Function

This function can electronically detect the errors and display the diagnosis by a series of flashing LEDs on the indoor unit. Then the unit will automatically switch to protection mode.



Anti-Rust Cabinet

Made from electrolytic zinc steel sheet and anti-rust coated components.



Sleep Mode

This function enables the unit to automatically increase (cooling) or decrease (heating) 1°C per hour for the first two hours, then hold steady for the next 5 hours, after that the unit will stop operation. It can maintain the most comfortable temperature and save energy.



Trapeziform Innergroove Copper

Compared with the triangular innergroove copper, it allows more adequate refrigerant to go through, improving heat exchange efficiency and lowers power consumption.

